



# TOWN HALL

LEAGUE OF CHRISTIAN  
SCHOOLS

FEBRUARY 10, 2021

# Agenda



## **ADF Partnership**

Program Details  
Benefits  
Equality Act



## **COVID Overview**

Overview  
Staff Vaccines  
Student Vaccines



## **New Stimulus Bill**

Long Term Impact  
Minimum Wage

# LCS Update



- Conference
- Festival
- Membership Renewals
- 2021 Conference

# Current State of COVID



COVID-19 Dashboard by the Center for Systems Science and Engineering (CSSE) at Johns Hopkins University (JHU)



Global Cases

106,740,881

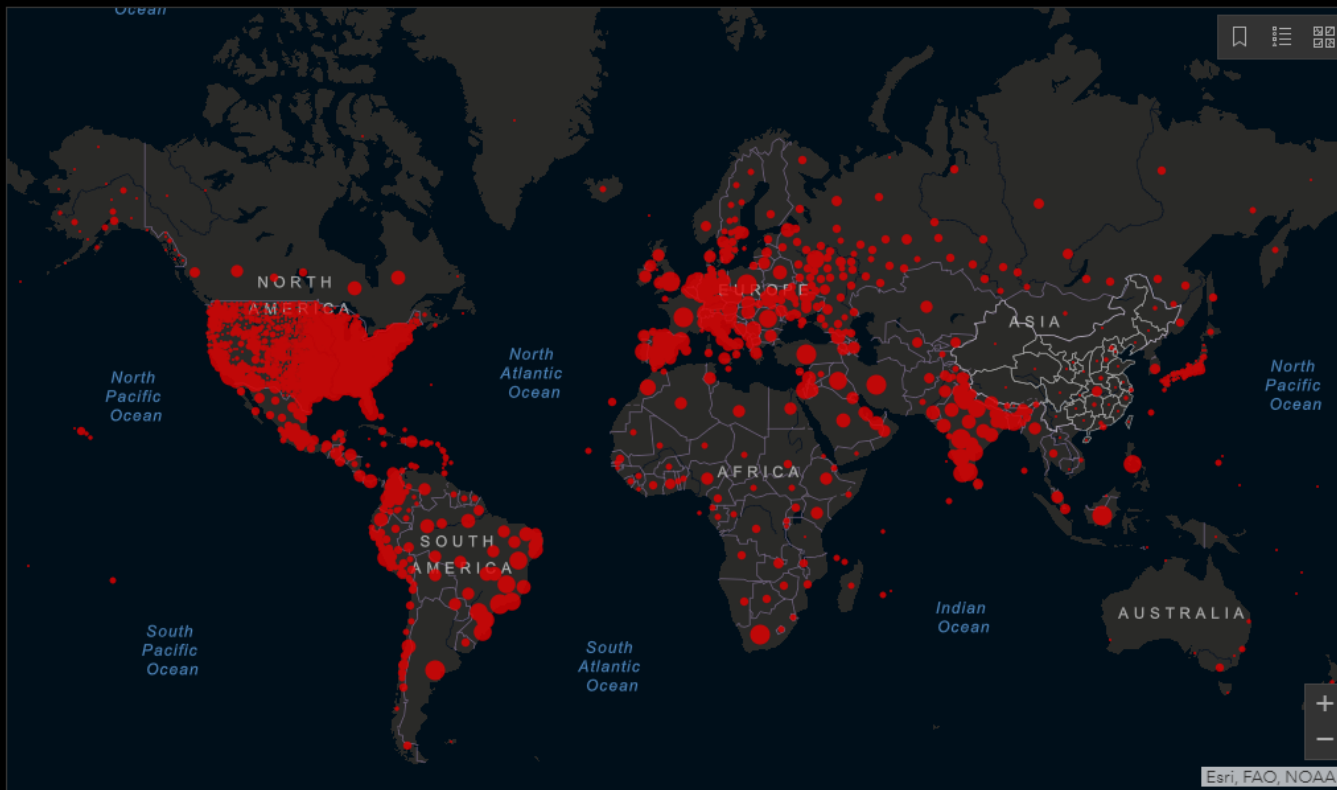
Cases by Country/Region/Sovereignty

- 27,160,308 US
- 10,847,304 India
- 9,524,640 Brazil
- 3,983,684 United Kingdom
- 3,953,970 Russia
- 3,419,194 France
- 3,005,487 Spain
- 2,655,319 Italy
- 2,548,195 Turkey
- 2,302,022 Germany
- 2,161,462 Colombia
- 1,985,501 Argentina
- 1,936,013 Mexico
- 1,556,685 Poland
- 1,481,396 Iran

Admin0 Admin1 Admin2

Last Updated at (M/D/YYYY)

2/9/2021, 4:22 PM



Cumulative Cases Active Cases Incidence Rate Case-Fatality Ratio Testing Rate

192

countries/regions

Lancet Inf Dis Article: [Here](#). Mobile Version: [Here](#). Data sources: [Full list](#). Downloadable database: [GitHub](#), [Feature Layer](#). Lead by JHU CSSE. Technical Support: [Esri Living Atlas team](#) and [JHU APL](#). Financial Support: [JHU](#), [NSF](#), [Bloomberg Philanthropies](#) and [Stavros Niarchos Foundation](#). Resource support: [Slack](#), [Github](#) and [AWS](#). Click [here](#) to **donate** to the CSSE dashboard team, and other JHU COVID-19 Research Efforts. [FAQ](#). Read more in this [blog](#). [Contact US](#).

Global Deaths

2,334,374

- 466,991 deaths US
- 231,534 deaths Brazil
- 166,731 deaths Mexico
- 155,158 deaths India
- 114,066 deaths United Kingdom
- 92,002 deaths Italy
- 80,295 deaths France

Global Deaths

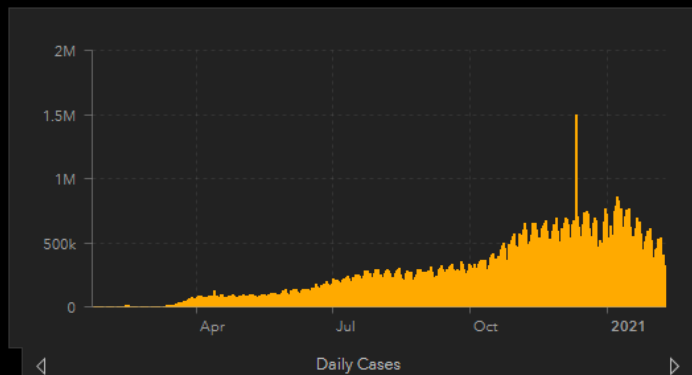
Global Recovered

US State Level

Deaths, Recovered

- 45,140 deaths, 133,470 recovered New York US
- 44,599 deaths, recovered California US
- 39,552 deaths, 2,104,894 recovered Texas US
- 28,048 deaths, recovered Florida US
- 22,590 deaths, 735,763 recovered Pennsylvania US
- 22,103 deaths, 70,208 recovered New Jersey US
- 21,802 deaths, recovered

US Deaths, Recovered

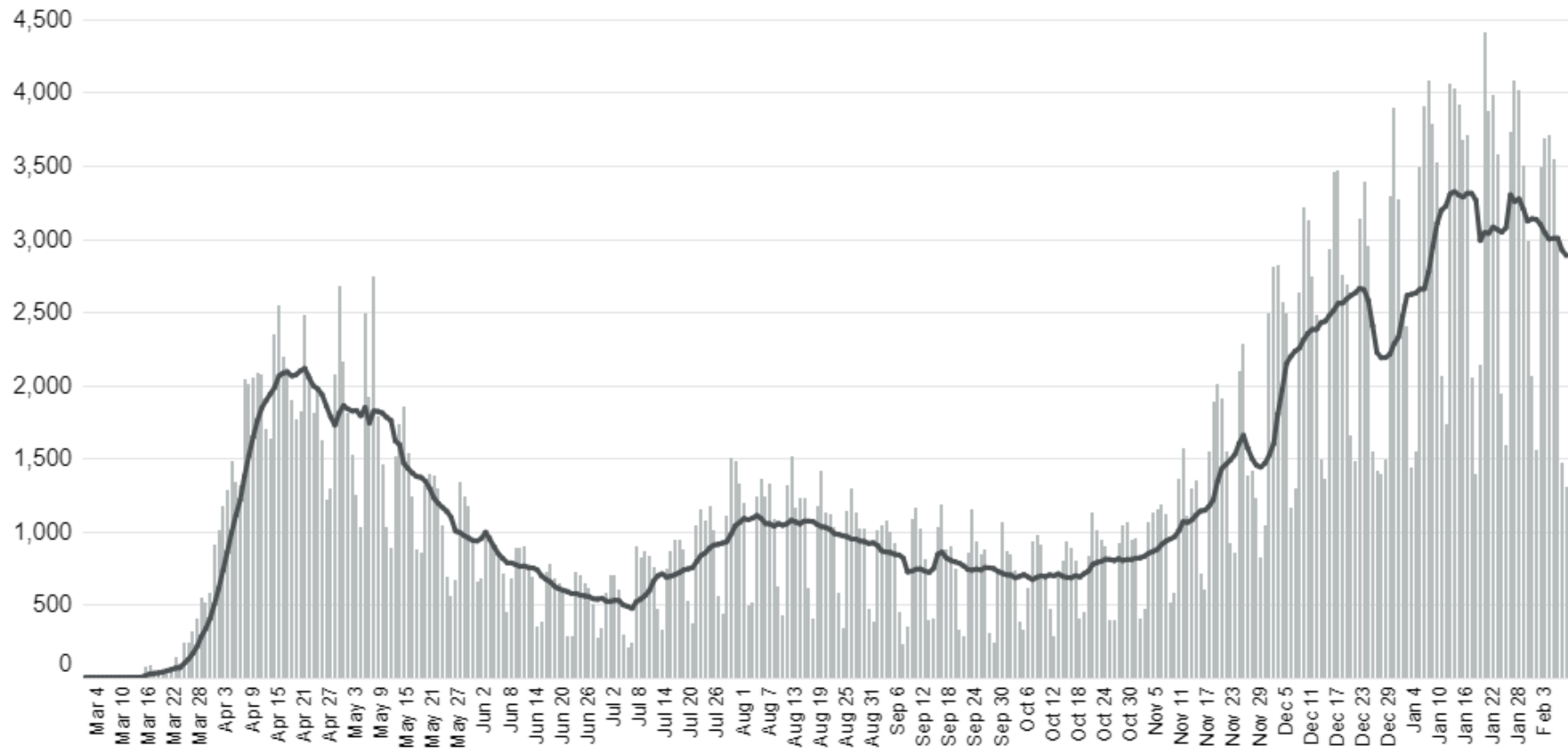


Daily Cases

# Current State of COVID

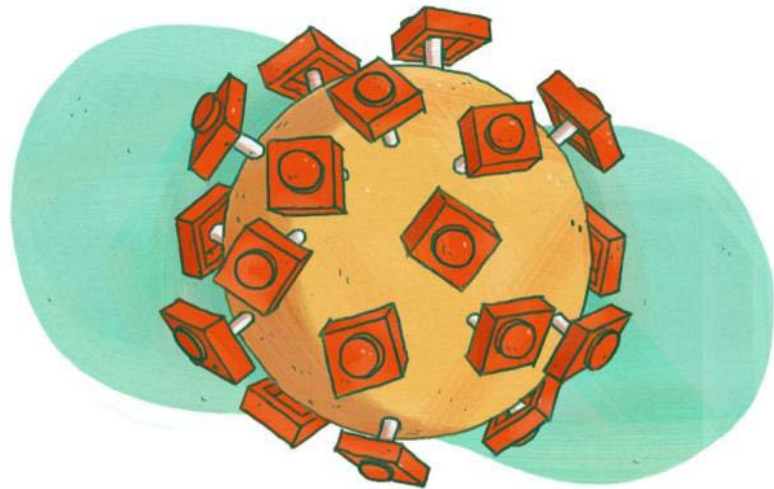
US DAILY DEATHS. 7-DAY AVERAGE LINE

Mar 1 CD Feb 8

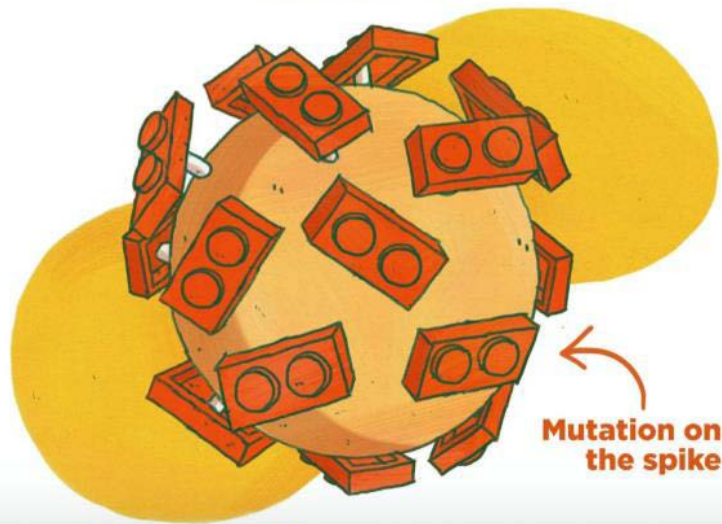




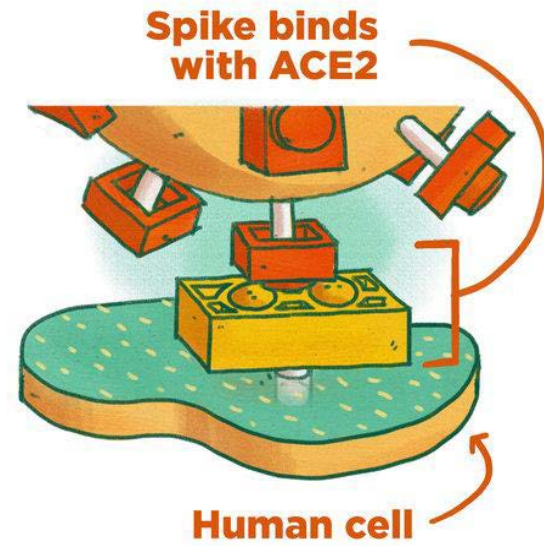
# Mutations



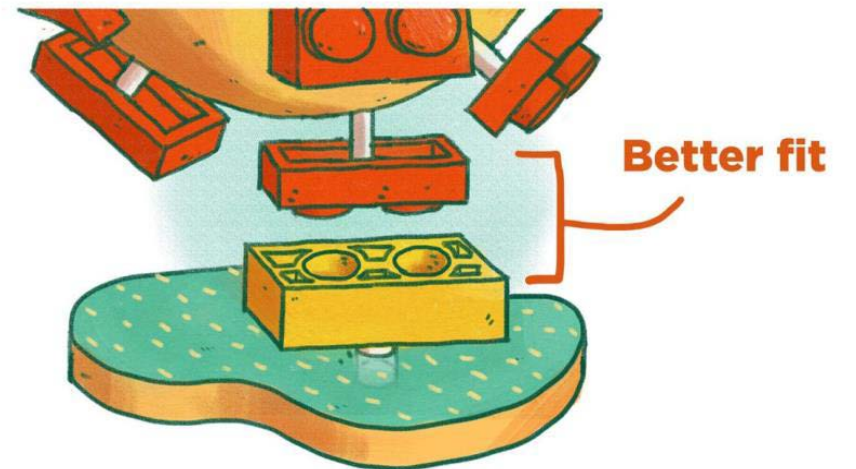
SARS CoV-2



Mutation on the spike



Human cell



Better fit

# Hope - Israel

- 92% efficacy
- 371 positive / 715,425 (>7 days after 2nd Pfizer dose)
  - 0.04%
  - 16 hospitalized (all survived)

## Just 0.04% of Israelis caught COVID-19 after two shots of Pfizer vaccine

Maccabi health fund releases preliminary results of a study comparing vaccinated and not vaccinated members' likability to contract the disease and said vaccine 92% effective.

By ROSSELLA TERCATIN JANUARY 28, 2021 17:47



# Vaccine Timeline

- When will you get a coronavirus vaccine?

	Winter 2020	Spring 2021	Summer 2021	Fall 2021
DATE RANGE	DISTRIBUTION			
Nov. – Dec. 2020	First vaccines (Pfizer, Moderna) expected to submit for FDA Emergency Use Authorization. Approval could be granted within weeks.			
Dec. 2020 – Jan. 2021	Approved vaccines start to go out to 4 priority groups: healthcare workers, frontline workers, people over 65, and people with preexisting conditions.			
Feb./Mar. – Apr. 2021	Vaccine distribution to 4 priority groups continues, with roughly 30 million vaccines distributed every month.			
Apr. – May/Jun. 2021	Vaccines become more widely available to young, healthy members of the general public.			
Jul. – Aug./Sep. 2021	Most adults in the US who want a vaccine likely have access at this point. But, remember, many coronavirus vaccines require 2 shots to become fully effective. The vaccination process can take 3–4 weeks per person.			
Oct./Nov. – Dec. 2021	Herd immunity through vaccination could be reached in the US, if 75% of people (or more) get their shots.			



# Staff Requirements

Equal Employment Opportunity  
Commission

EEOC Guidelines

Visit [LCS.Education](https://www.lcseducation.com) for web link



# Key Considerations

- Employers can require employees to get immunized with the coronavirus vaccine, with some accommodation exceptions.
- The employer must consider whether to exempt an employee with a disability.
  - This requires considering whether there is a reasonable accommodation, including:
    - working remotely
    - job restructure or
    - leave of absence
- School must engage in an interactive process to determine if there is a reasonable accommodation and if so, will it cause an undue hardship.
- School is not required to alter its program.

# Student Requirements



- If the state or local health department or regulations permit requiring vaccinations in circumstances involving a pandemic, then the Christian school can require student to receive a vaccination to attend in person.
- The student is not covered under the ADA or state anti-discrimination statute since the student is not an employee.
- **If the school receives federal financial aid...**

# Minimum Wage Increases

Federal	States
\$7.25	29 States have higher
\$15 by 2025	See Chart



Thank you

QUESTIONS?